

# SEW WHAT DESIGNS

## USING A USB DEVICE TO TRANSFER DESIGNS

When I upgraded from my Designer 1 to the SE with a USB stick I was so pleased that I no longer needed to use floppy disks to get designs to my sewing machine.

I had been using the Disk Manager software from Version 5 days through the evolution to VIP then 3D and now the 4D Software. I purchased the 4D software at the same time as the SE and just assumed that the USB Disk Manager was used to transfer designs to the USB stick. It is if you have the Designer 1 USB but the techniques are quite different if you have the SE, Diamond or Opal. I have had a number of requests for help with using the USB from ladies who like me have probably been used to using Disk Manager to write to floppies for the Designer 1.

In fact you have several choices as to how you can transfer designs across to the USB stick. You can use Windows XP itself, 3D or 4D Organiser or the Send Options in the 3D or 4D Software.

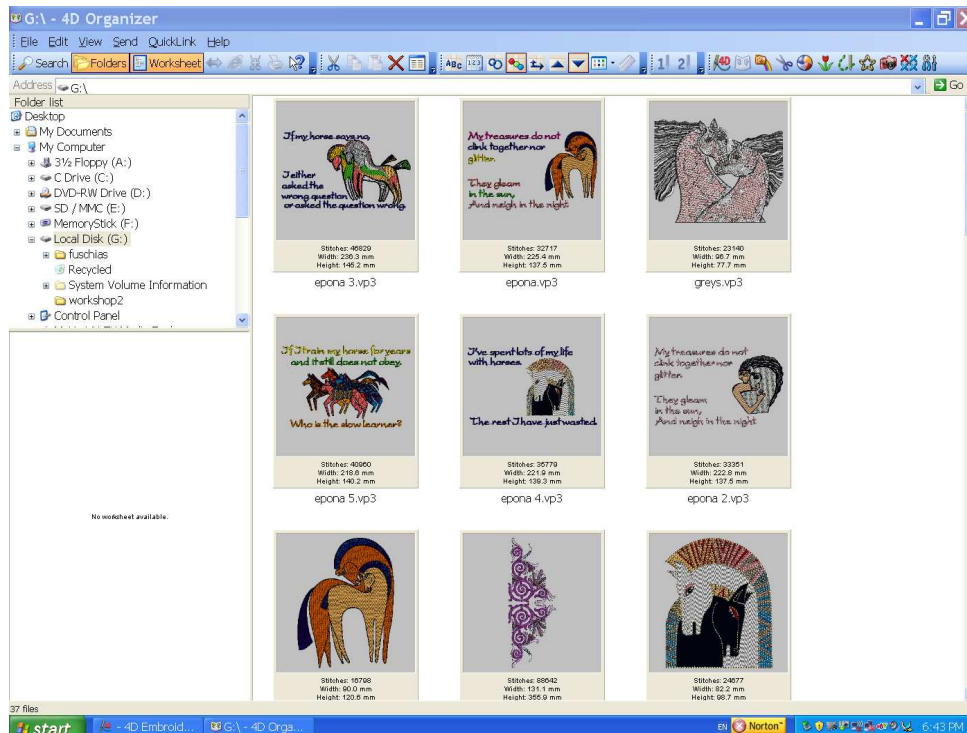
When I attach my Husqvarna Viking USB stick to my laptop it is called Local Disk G. because of the way my laptop is configured. Your computer may use a different letter for your USB stick.

The USB stick is a great way to transfer designs as they can be transported from room to room or to classes very conveniently. In addition they provide a useful back up of the designs themselves. You can now purchase 1 and 2G USB sticks for a fraction of the price that they were when they first appeared on the market. Folders of designs can be stored on the sticks and the only problem is that you need to number your sticks or identify them somehow so that you know which designs are on which stick. Should anything happen to your computer then you have not lost your designs. I tend to be a bit obsessive as I have my designs backed up three ways: on an external hard drive, on dvd and on USB sticks. I have had a hard drive burn out and I was surprised to be told that 3 years is a long life for the average hard drive in a desktop computer.

Any USB stick can be used in your sewing machine. You do not need to use the ones sold by your sewing machine company.

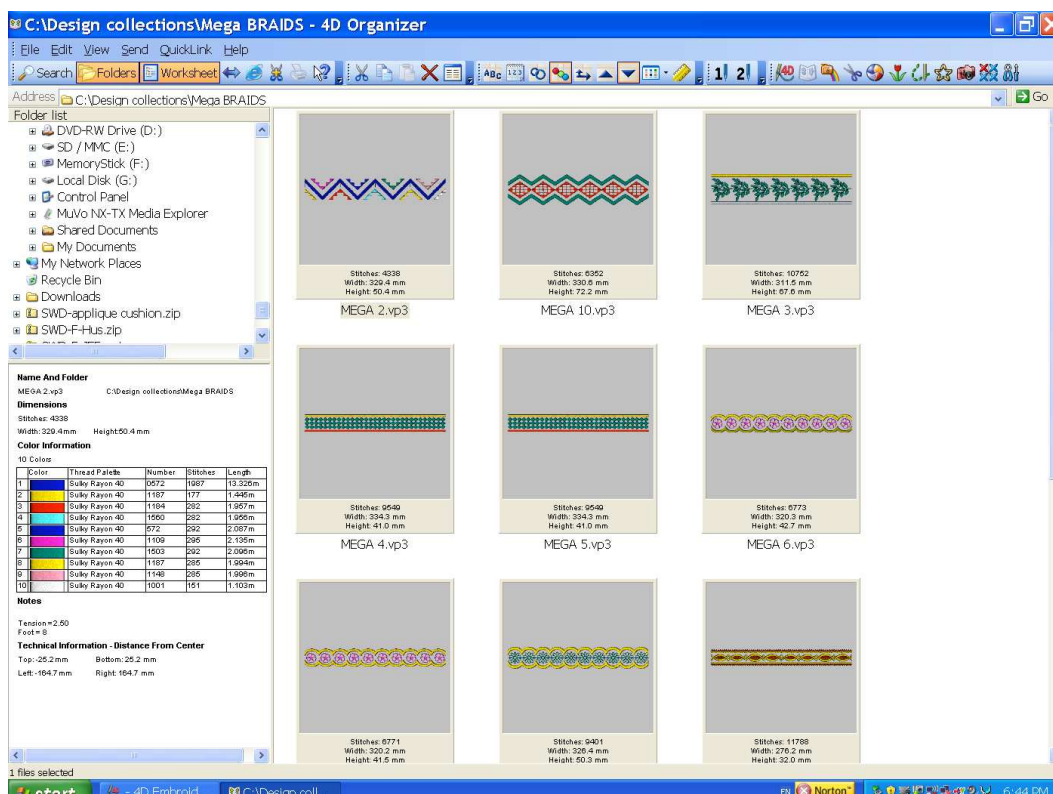
# USING 3D/4D ORGANISER

When 3D/4D Organiser is opened the Folder list on the left shows the contents of your computer and the designs in that folder are shown as thumbnail images on the right in the preview window. This image shows the first 9 designs on my USB stick.



My USB stick is labelled Local Disk G and I can see any designs or folders of designs that are on it. I can delete any designs on my USB stick by right clicking on the designs and selecting delete

## ❖ Step 1: Locate the design you want to transfer



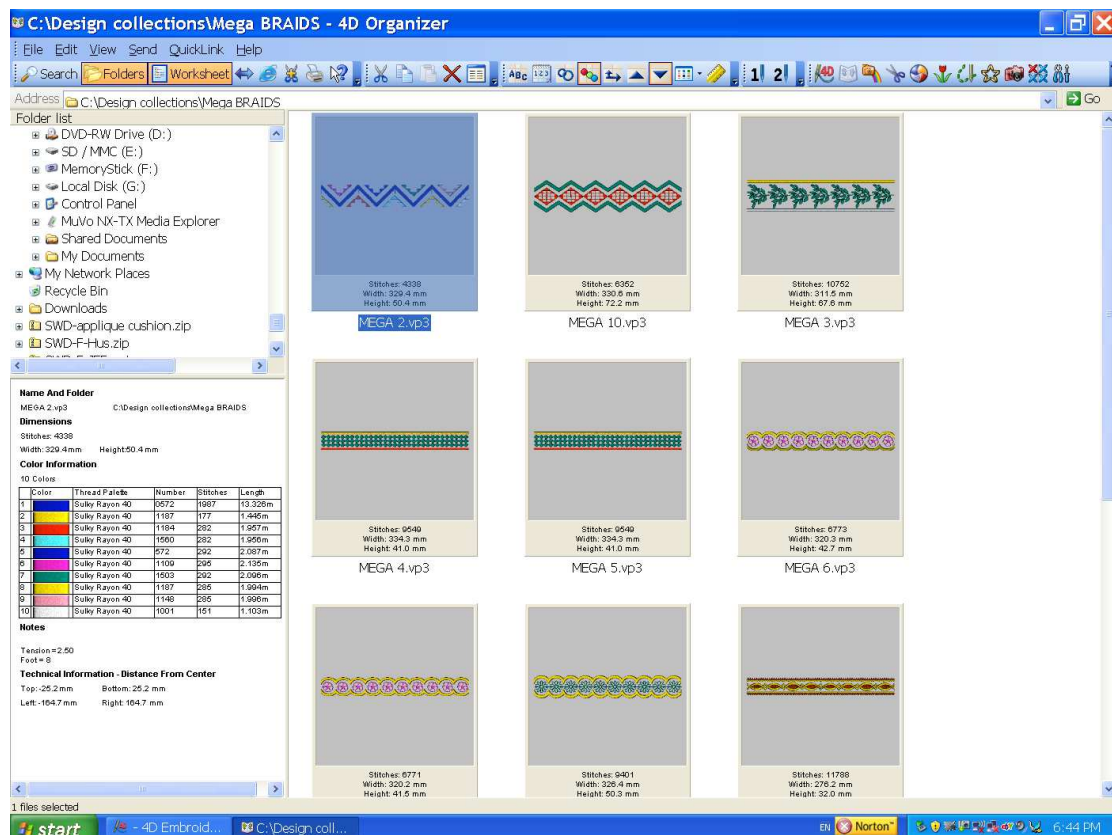
In the image above I have selected the folder in my Design Collections called “mega Braids” and the designs in that folder are displayed on the right.

❖ Step 2: Find your USB on the Folder list

You need to move the slider on the folder list so that you can see your USB device listed as a movable drive. Mine is called local Disk G.

❖ Step 3; Select the design you want to move to the USB stick

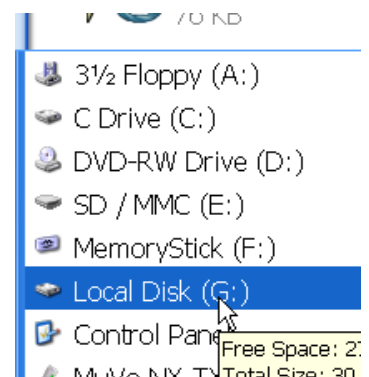
Select the design you want to transfer to the USB stick by clicking on that design. It will change color. They turn blue on my computer.

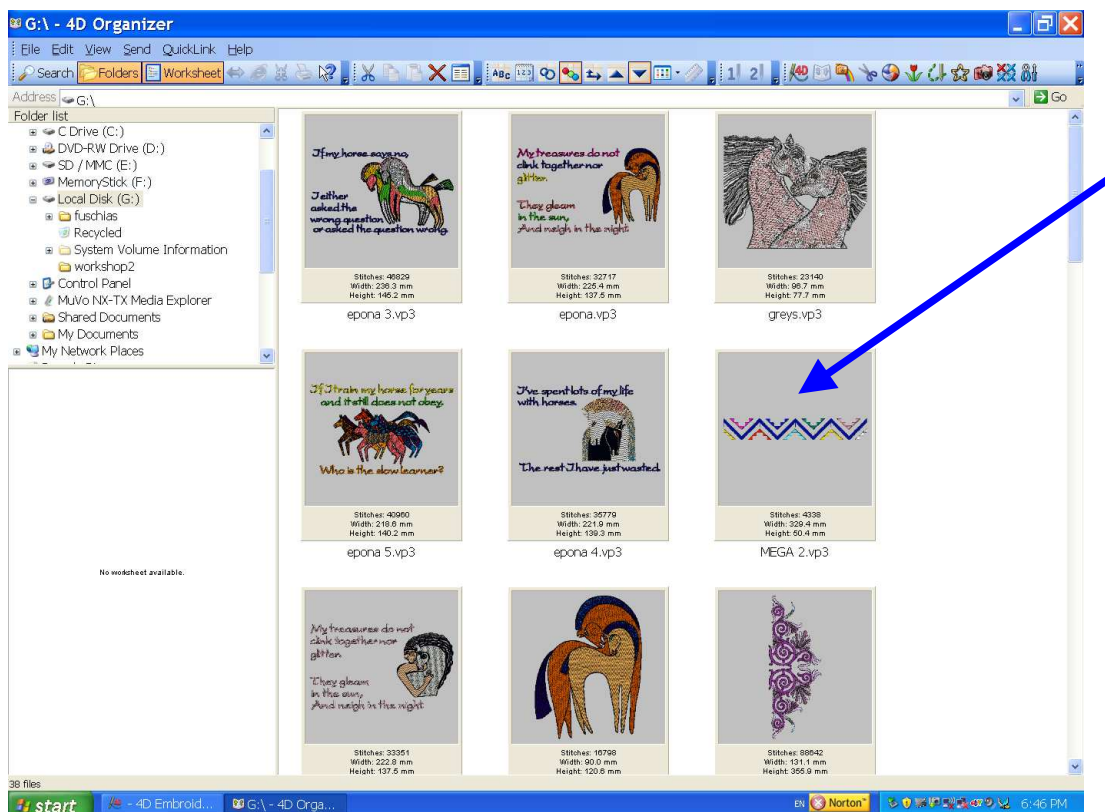


Step 4: Drag and Drop

Holding the left mouse button depressed, drag the design across to the folder list and wait till you see the USB stick name change colour. Then release the left mouse button and the design will be copied onto the USB stick. The design still remains on your computer; only a copy is made on the USB stick.

The designs transfer very quickly and if you want to check that the design IS on the USB stick you can double click on the USB stick on the folder list and the contents of the disk will be displayed in the preview pane.





This is my USB stick after I have transferred my mega braid design over to it. The design retains its individual name or number.

#### ❖ Moving more than one design.

If you wish to transfer several designs at once you can select individual designs by holding the **CTRL** key down and left mouse click on the designs that you want to transfer. You cannot scroll down the screen while doing this so it is useful to change to the small thumbnail view if there are a lot to select.

If the designs you want are one after the other you can select the first one by a left mouse click and then hold the **Shift** key on the last design and all designs between the first and last will be selected.

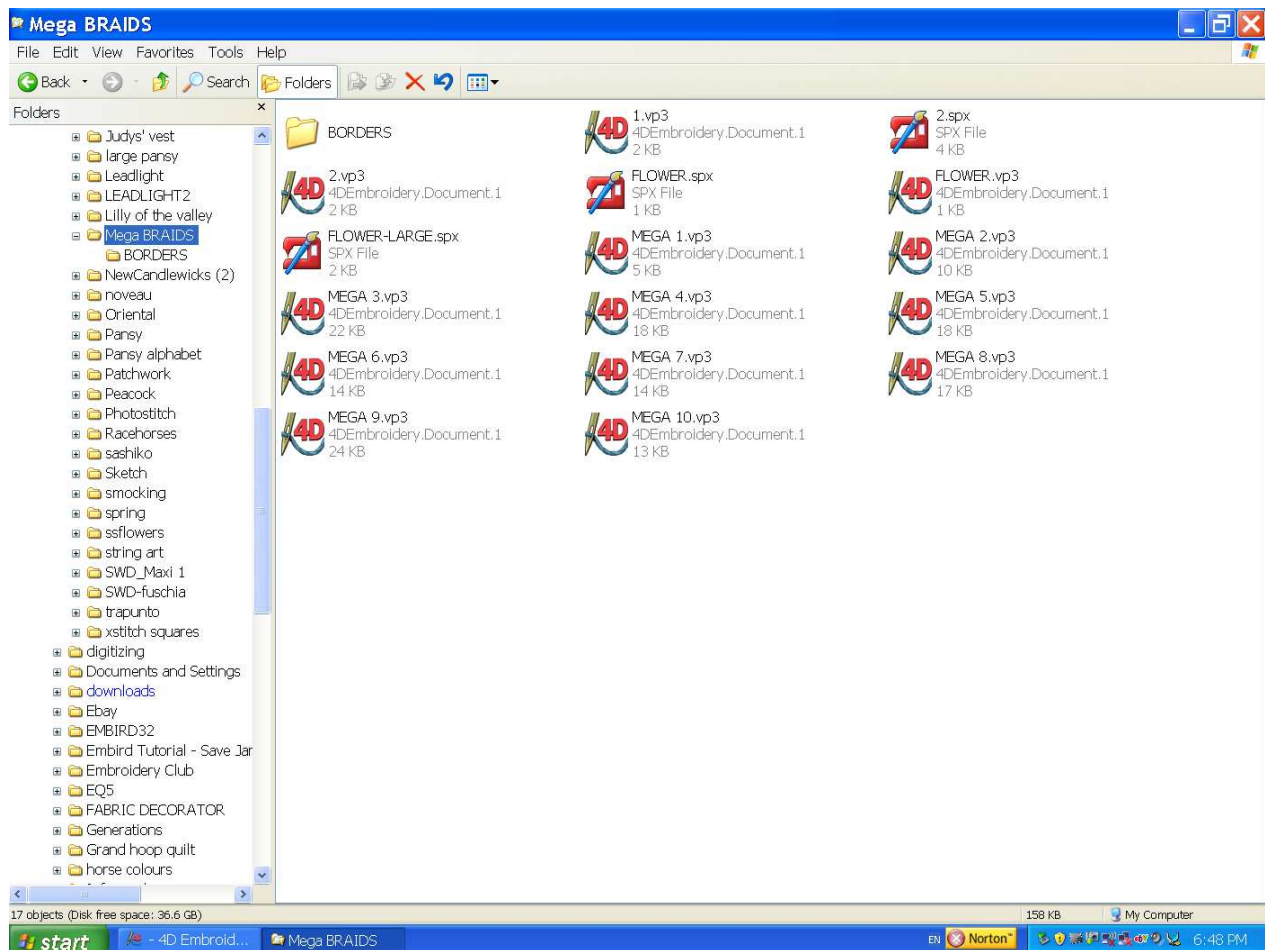
Once a series of designs are selected you just “drop and drag” the group in exactly the same way as a single design.

The advantage of using the embroidery software is that you can see an image of the design. If you use Windows XP you can only see the file name as the designs all have the same thumbnail image. However the big advantage of using the windows view is that you can transfer whole folders of designs over to the USB stick. You cannot do this in the 3D or 4D software. So if you are using the stick as a back up device as well you would be transferring designs in their folders instead of individual files.



# USING WINDOWS XP

## ❖ Step 1: locate the design you want to transfer



- ❖ Step 2; Find your USB on the Folder list
- ❖ Step 3; Select the design you want to move to the USB stick
- ❖ Step 4: Drag and Drop

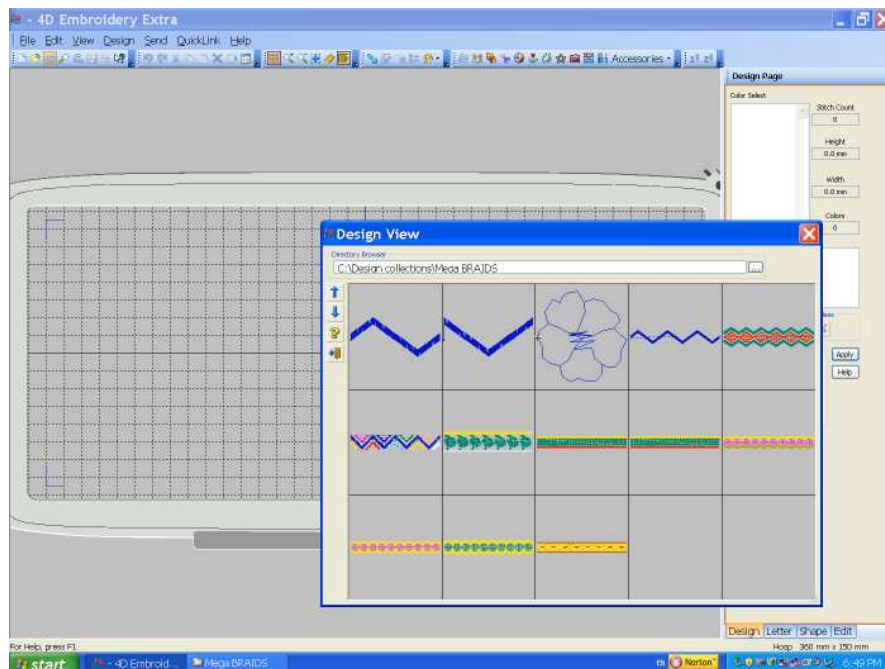
You can transfer single, multiple designs or whole folders of designs. In fact I could just select my entire Design Collection folder and transfer it. It might take a while to copy all my designs and my USB stick would need to be able to hold it all. But it can be done this way.

If you want to transfer a lot of designs at once it is easier to use the list view and select them as described above.

Another way that you can transfer onto the embroidery stick is by using the 3D or 4D embroidery software. When you installed the software you would have completed the steps to set up the Send options. You can configure one of these to transfer to a USB stick.

This sends a copy of the design to the USB stick but it will change its name to **# Send** and it can only be used for one design at a time.

## USING 3D STUDIO /ARTIST OR 4D EMBROIDERY

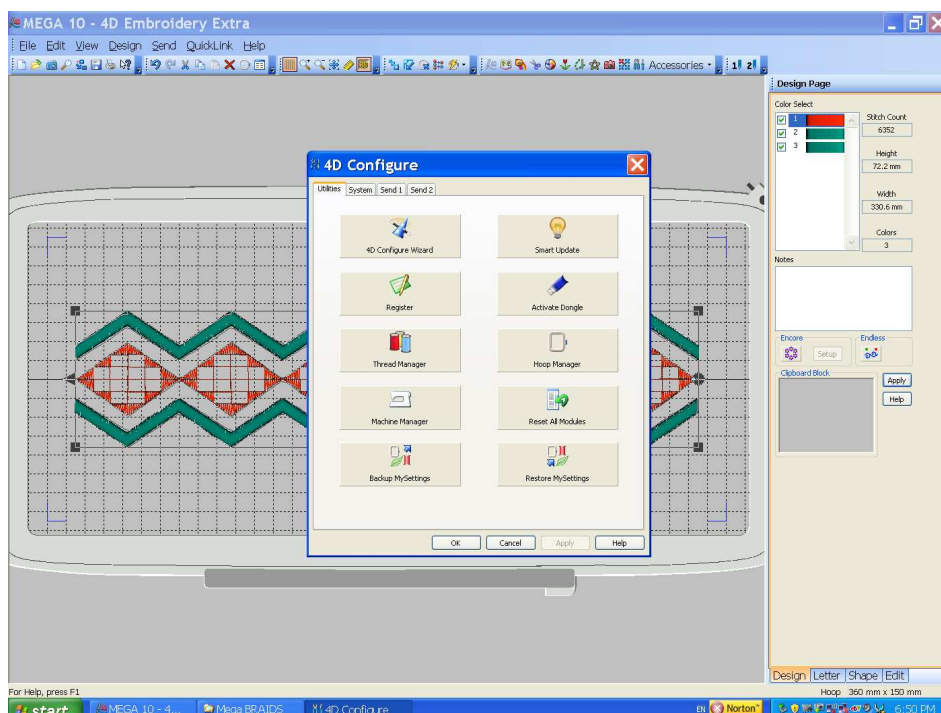


- ❖ Step 1: Locate the design in the 3D/4D software

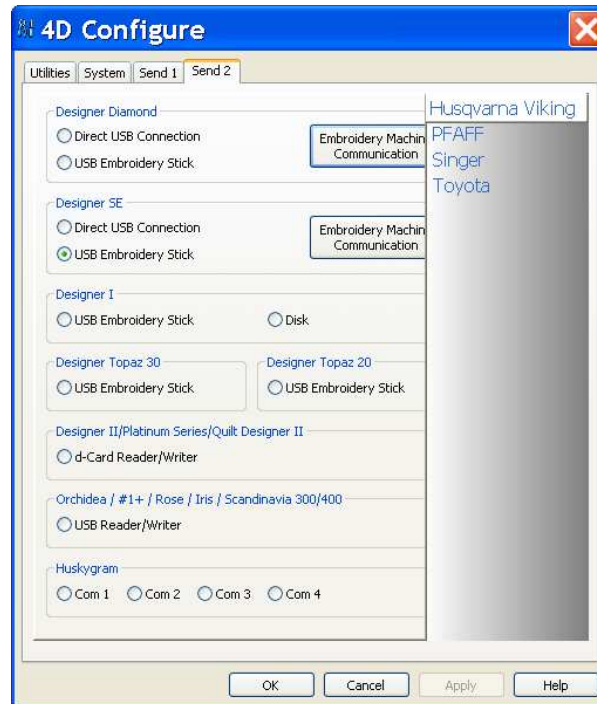
Using either the Design view or File Open locate the design you want to transfer and open it into the workspace of the 3D / 4D software

- ❖ Step 2: Open 3D/ 4Dconfigure


To check if you have a Send Option configured open up the Configure Window and select either the Send 1 tab or Send 2 tab. I have used Send 2 for my USB connection.



I have my Send 1 for my Pfaff machine and use Send 2 for my SE so I have the Husqvarna Viking tab selected on the right.

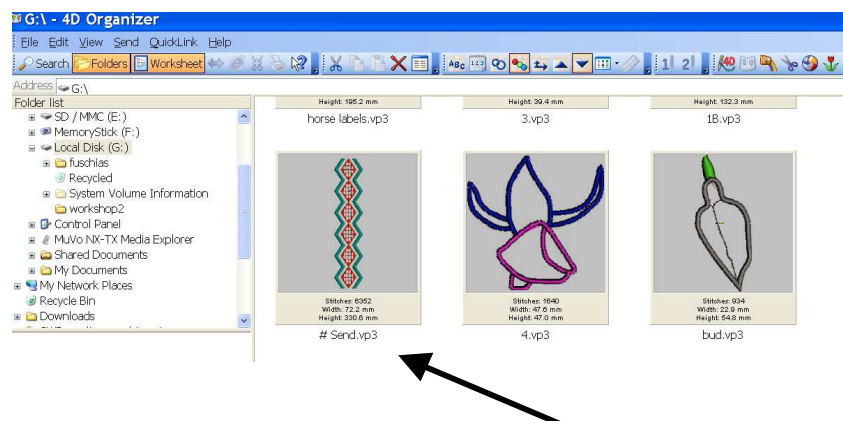


Under Designer SE I have the USB embroidery stick selected. If you had one of the other machines you would select the USB stick on the appropriate machine. If you had another Husqvarna Viking machine you could set up the Send1 for the other machine as you can only have one machine selected on each Send tab.

- ❖ If this setting is ok then click on **OK** to close.
- ❖ If you need to adjust the settings then when you close you need to click **Apply**
- ❖ Click the Send 1  (or Send 2) that you have configured for the USB transfer

The design will be copied to the USB stick with the title **#Send**

If you already had a design on the USB stick that you had previously transferred this way it would have been replaced by the most recent design.



## USING USB DISK MANAGE SOFTWARE

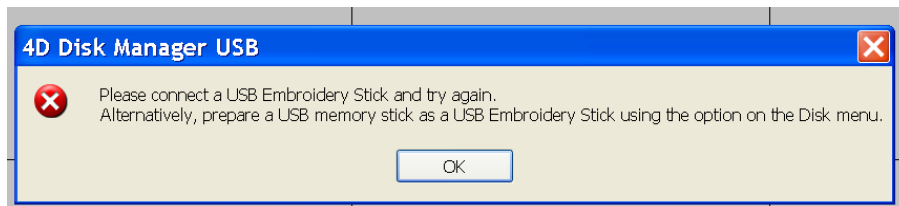
I think a lot of people are confused at first as we were all so used to using the Disk Manager software to transfer designs to our sewing machines. I certainly was at first and could not understand why I could not get the designs to my SE via disk manager for my USB stick this way.

Once I realised that disk manage was now only for the Designer 1 USB or the Designer 1 floppy disk machine it all made sense. If you attach a new USB stick to your computer you will see the following prompt

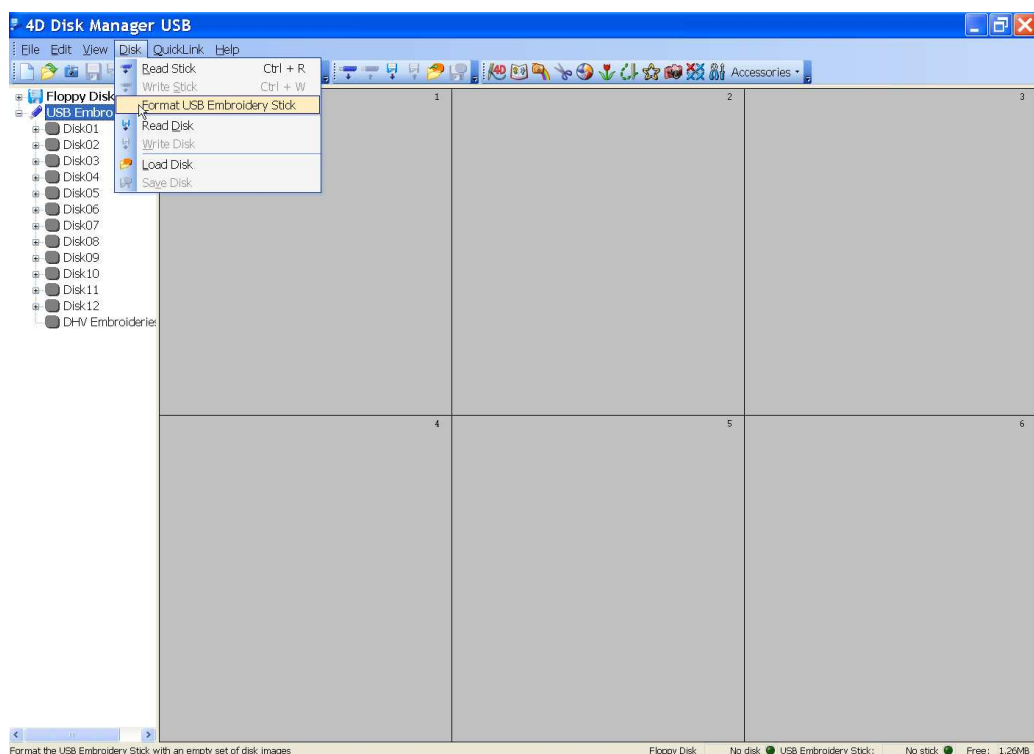


The computer will automatically register the new hardware and the prompt will disappear.

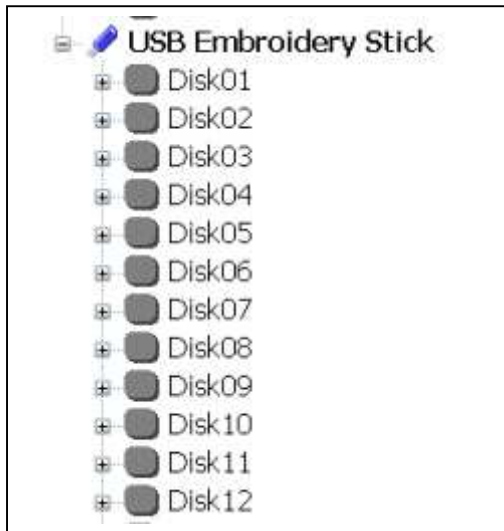
When you open the Disk Manager software you will need to format a new USB stick before you can transfer designs to it. If you get the following prompt:



❖ Click OK and select Format USB stick from the Disk menu.







Once the USB stick is formatted you can open up one of the locations on the USB embroidery Stick list on the left of the workspace and place designs into the locations on the right.

When you have the designs you want on the different locations then you can write the designs to the USB stick using the Write to Stick icon.

You can also use USB Disk Manager to write to floppy disks for the older Designer 1 machines. New floppy disks will need formatting just like a new USB stick. The Designer 1 and the Designer 1 USB models use a different format for designs called .shv. This is why they have to be transferred using Disk Manager as it will convert designs into the .shv format in the specific folder format that these machines can read. The newer machines like the SE and Diamond can read the .vp3 embroidery format directly off the USB stick.

I hope that this mini tutorial has helped you with any USB problems you may encounter. Please do not hesitate to contact me if I can help in any way.

All Rights Reserved  
**Carolyn Duncan**  
**Tasmania**  
**Australia**  
**2008**

**Distributing copies of this tutorial in any way or the use of this tutorial in a classroom situation without the permission of the author is a breach of copyright.**